



# Amylin Polyclonal Antibody

<b>Catalog No</b>	YP-Ab-15873
<b>Isotype</b>	IgG
<b>Reactivity</b>	Human;Rat;Mouse;
<b>Applications</b>	WB;IHC;IF;ELISA
<b>Gene Name</b>	IAPP
<b>Protein Name</b>	Islet amyloid polypeptide
<b>Immunogen</b>	The antiserum was produced against synthesized peptide derived from human Amylin. AA range:1-50
<b>Specificity</b>	Amylin Polyclonal Antibody detects endogenous levels of Amylin protein.
<b>Formulation</b>	Liquid in PBS containing 50% glycerol, 0.5% BSA and 0.02% sodium azide.
<b>Source</b>	Polyclonal, Rabbit,IgG
<b>Purification</b>	The antibody was affinity-purified from rabbit antiserum by affinity-chromatography using epitope-specific immunogen.
<b>Dilution</b>	Western Blot: 1/500 - 1/2000. Immunohistochemistry: 1/100 - 1/300. Immunofluorescence: 1/200 - 1/1000. ELISA: 1/10000. Not yet tested in other applications.
<b>Concentration</b>	1 mg/ml
<b>Purity</b>	≥90%
<b>Storage Stability</b>	-20°C/1 year
<b>Synonyms</b>	IAPP; Islet amyloid polypeptide; Amylin; Diabetes-associated peptide; DAP; Insulinoma amyloid peptide
<b>Observed Band</b>	25kD
<b>Cell Pathway</b>	Secreted .
<b>Tissue Specificity</b>	
<b>Function</b>	disease:IAPP is the peptide subunit of amyloid found in pancreatic islets of type 2 diabetic patients and in insulinomas.,function:Selectively inhibits insulin-stimulated glucose utilization and glycogen deposition in muscle, while not affecting adipocyte glucose metabolism.,online information:Amylin entry,similarity:Belongs to the calcitonin family.,
<b>Background</b>	islet amyloid polypeptide(IAPP) Homo sapiens This gene encodes a member of the calcitonin family of peptide hormones. This hormone is released from pancreatic beta cells following food intake to regulate blood glucose levels and act as a satiation signal. Human patients with type 1 and advanced type 2 diabetes exhibit reduced levels of the encoded hormone in blood and pancreas. This protein also exhibits a bactericidal, antimicrobial activity. [provided by RefSeq, Jul 2016],



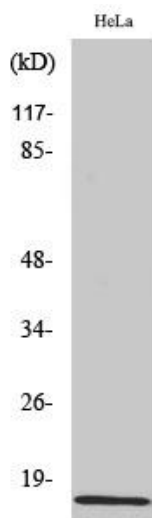
**matters needing attention**

Avoid repeated freezing and thawing!

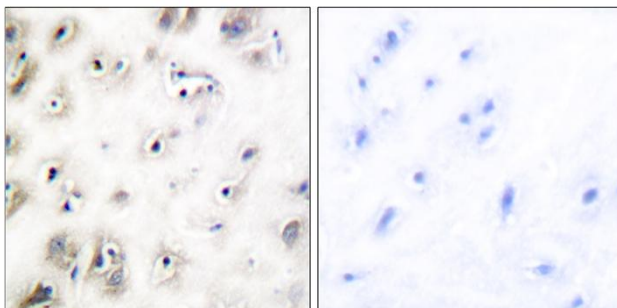
**Usage suggestions**

This product can be used in immunological reaction related experiments. For more information, please consult technical personnel.

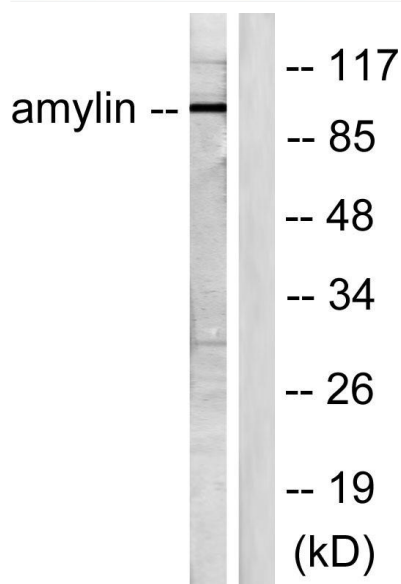
## Products Images



Western Blot analysis of various cells using Amylin Polyclonal Antibody diluted at 1:1000



Immunohistochemistry analysis of paraffin-embedded human brain tissue, using Amylin Antibody. The picture on the right is blocked with the synthesized peptide.



Western blot analysis of lysates from HeLa cells, treated with EGF 200ng/ml 30', using Amylin Antibody. The lane on the right is blocked with the synthesized peptide.